



**Fireplace
Heatsaver**

Patent pending GB 2446275



Tel 01924 368899
Email enquiries@fireplaceheatsaver.co.uk
Web www.fireplaceheatsaver.co.uk

The Fireplace Heatsaver renders the fire and chimney redundant, reducing heating bills and chimney draughts.

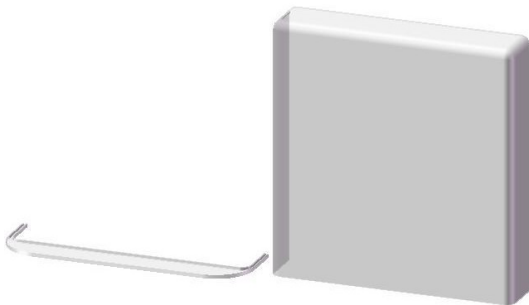
Making your home warmer and more comfortable whilst still maintaining the focal point of the fireplace.

It should only be installed where a primary heating system (i.e. boiler and radiators) is present in the dwelling. It is **NOT** a fireguard and is **NOT** suitable for back boilers, stoves or appliances with a permanently ignited pilot light

Fireplace Heatsaver installation instructions

Step 1

Unpack the Fireplace Heatsaver and the base plate. Check that there is no damage to both units. Any damage should be reported.

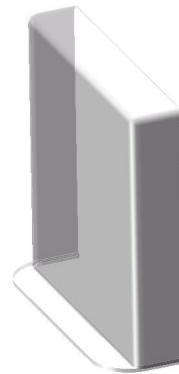


Base stand

Fireplace Heatsaver

Step 2

Insert the Fireplace Heatsaver into the groove in the base plate to create a stand



Step 3

Ensure that the fire is not lit and is at room temperature.



Step 4

Position the Fireplace Heatsaver centrally over the fire or fireplace opening.



WARNING

The Fireplace Heatsaver is **NOT** a fireguard.
Only install when the fire is not operating and has cooled to normal room temperature.
Not suitable for Back Boilers or Stoves.

Clean the Fireplace Heatsaver with a dry clean soft cloth.

Registered office
Environmental Fireplace Solutions Ltd
172 Ferry Lane, Stanley, Wakefield WF3 4LT
Company Registered In England No. 6068185